

# Master 1 MEEF1



## Teaching primary education in France and abroad





# What is Master Mention 1 MEEF ?



## Presentation:

MEEF stands for Métiers de l'Enseignement de l'Éducation et de la Formation which means Learning, Education and Professional Training Jobs.

Mention 1 regards Primary Education specifically (meanwhile Mention 2 is for Secondary Education, 3 for School Management and 4 for Research and Innovation in Education).

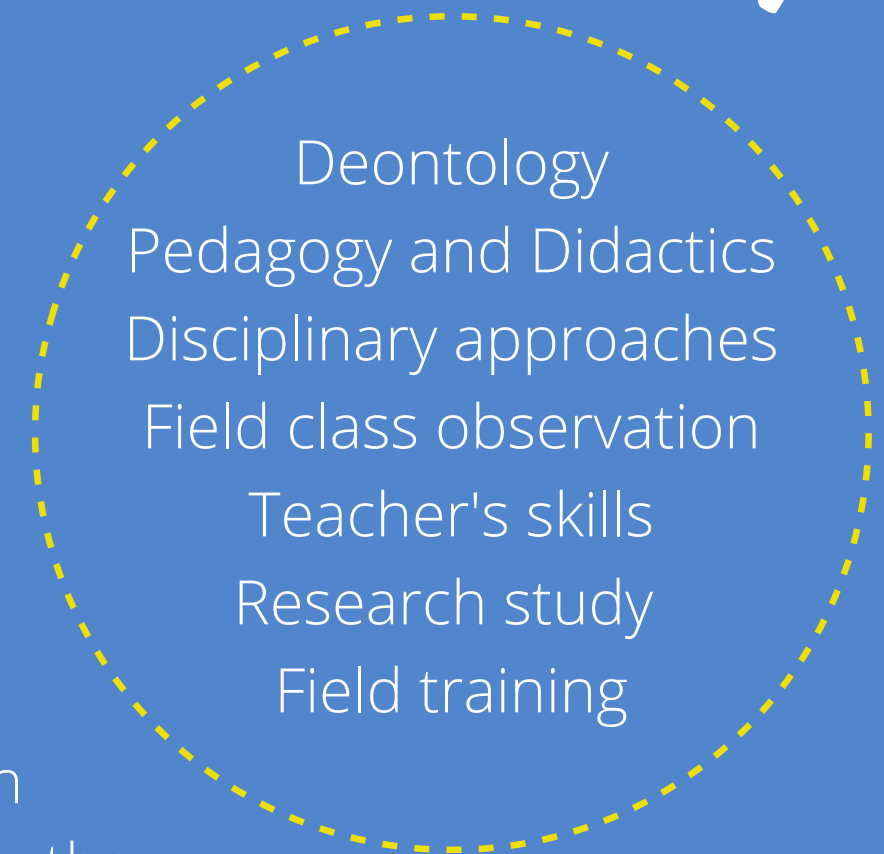
## Contents:

Every aspect of being a teacher is part of the training: how to speak in public, how to teach and assess disciplinary contents, how to adapt to the pupils' diversity and how to reflect on every teacher's practice.

Students will be placed in primary school, with a professional teacher as tutor, and therefore will have the opportunity to address pupils directly.

Please remember our calendar dates may vary.

- Autumn semester: early september > late december
- Spring semester: january > early june



# National Institute for Teacher Education (INSPÉ) - Versailles



In France, there is one INSPÉ in every region.  
The INSPÉ–Versailles is integrated into CY-Cergy Paris University and works in partnership with other universities that provide teaching education.



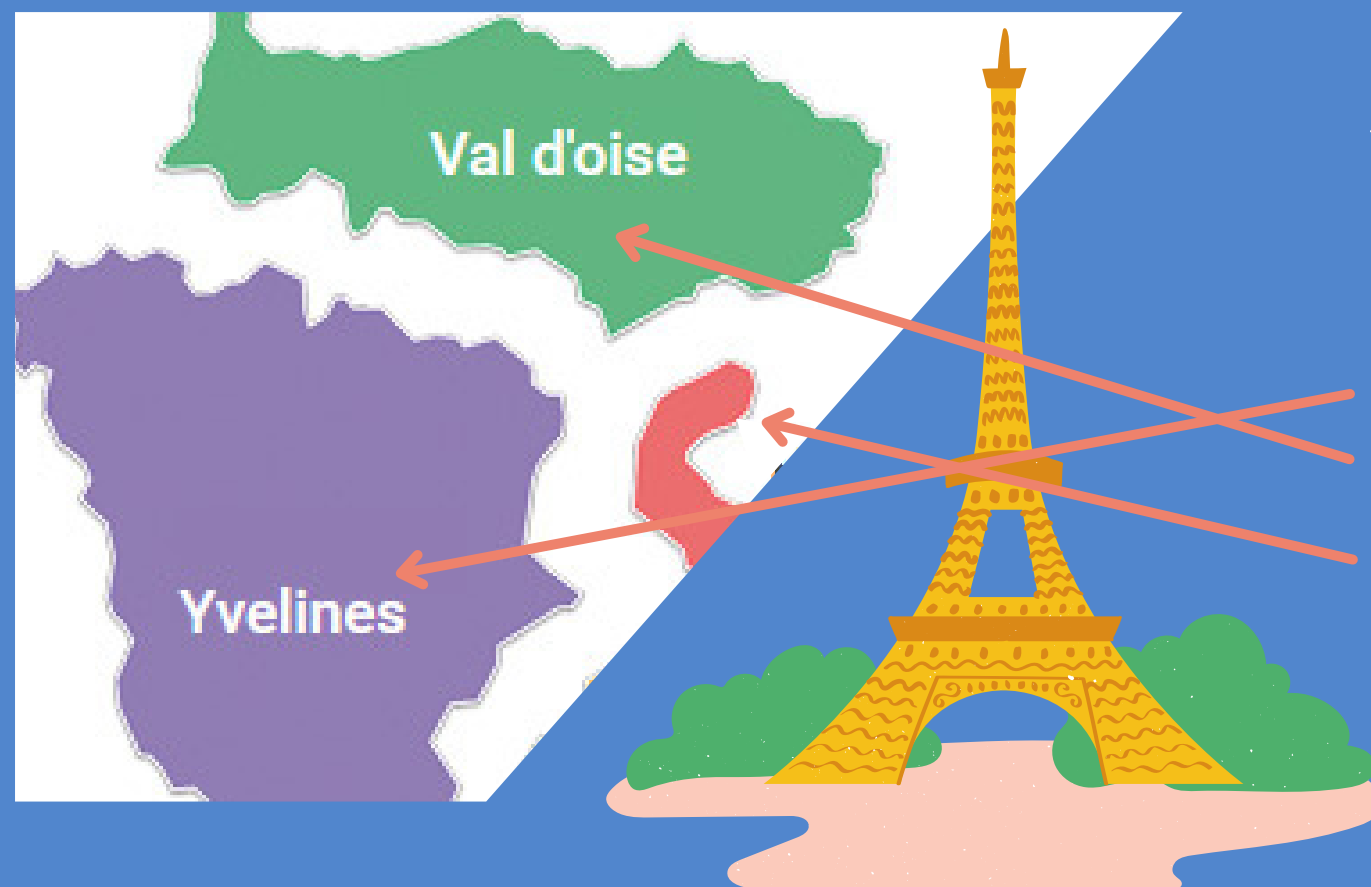
**Saint Germain  
en Laye**



**Site de Cergy -  
Hirsh**



**Gennevilliers**



Depending on selected unit courses, 4 locations are part of the INSPÉ, but our Erasmus students will most likely attend courses in:

- Saint Germain en Laye
- Cergy - Hirsh
- Gennevilliers



## The 2023-2024 new path **Teaching primary education in France and abroad**

brings solutions to internationalisation at home by enrolling all exchange students in a group that will study european matters from an international cultural perspective.

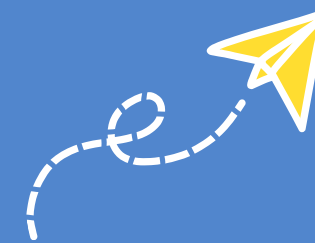


 All courses will be taught in French, except the courses related to teaching English.

Exchange students will have to choose amongst all EC (Constituent Elements) in the study programme (next page) for 60 ECTS a year (30 ECTS/semester).

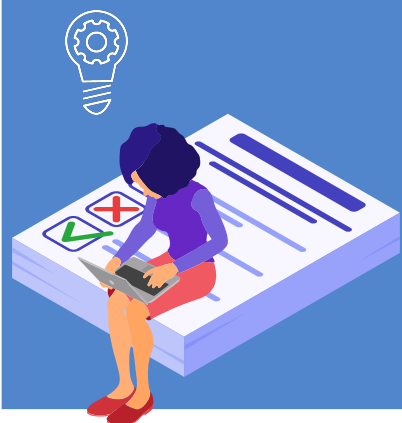


2 EC are compulsory for exchange students and will be documented in the learning application:



 Portfolio  
in EC 151 (5ECTS)

 French as a Foreign Language  
at CLF (6 ECTS)







Master 1 MEEF 1  
in **Cergy-Hirsch**

Programme study

Teaching primary education in France and abroad



<b>COURSE UNIT A</b> <b>INSTITUTIONAL AND PROFESSIONAL IN-DEPTH KNOWLEDGE</b>	ECTS		<b>COURSE UNIT B</b> <b>TEACHING DISCIPLINARY SUBJECTS IN PRIMARY SCHOOL.</b>	ECTS	
	S1	S2		S1	S2
EC 111 Referring educational frame and ethics, Inclusive schooling, fundamental concepts	3	2	EC 121 French Learning to read, comprehensive-reading, writing, oral skills and language study	4	4
EC 112 Communication skills: speaking in public (body presence and voice)	1	1	EC 122 Maths Educational methods in mathematics and didactics	4	4
EC 113 ICT: digital culture and practices	2	2	EC 131 Methodology and disciplinary knowledge in History, in Geography	1	1
<b>COURSE UNIT C</b> <b>REFLECTIVE TEACHING PRACTICES AND PROFESSIONAL DEVELOPMENT</b>			EC 132 Arts Teaching: Plastic arts, music and choir	1	1
EC 141 Observation and guided field practice in pre-primary and primary school placement (SOPA 1-2-3)	2	1	EC 133 Teaching experimental sciences and technology	1	1
EC 142 Preparation and analysis of field practices			EC 134 Teaching physical and sports education	1	1
EC 143 Field practice in classes with a multilingual outlook	0	3	EC 135 Teaching a second language	1	1
 <b>EC 151 Portfolio Erasmus+</b> <b>Research methodology and epistemology</b>	<b>5</b>	<b>5</b>			
EC 163 Crosscultural projects (Erasmus Days in S1)	1	1	<b>COURSE UNIT D</b> <b>CENTER OF FRENCH LANGUAGE</b>		
EC 161 Didactical analysis workshops	1	1	 <b>French as a foreign language</b>	<b>6/6</b>	
EC 162 Crosscultural projects	1	1			

# Contacts

For more information,  
please visit our website



**INSPE**

**Institut national  
supérieur du professorat  
et de l'éducation  
Académie de Versailles**



Office Manager : Jennifer CONNAN  
jennifer.connan@cyu.fr +33 1 30 87 47 28

ERASMUS Coordinator : Maud Kerforne  
maud.kerforne@cyu.fr +33 1 30 87 47 30

Academic Coordinator: Florence BRAY  
florence.bray@cyu.fr

